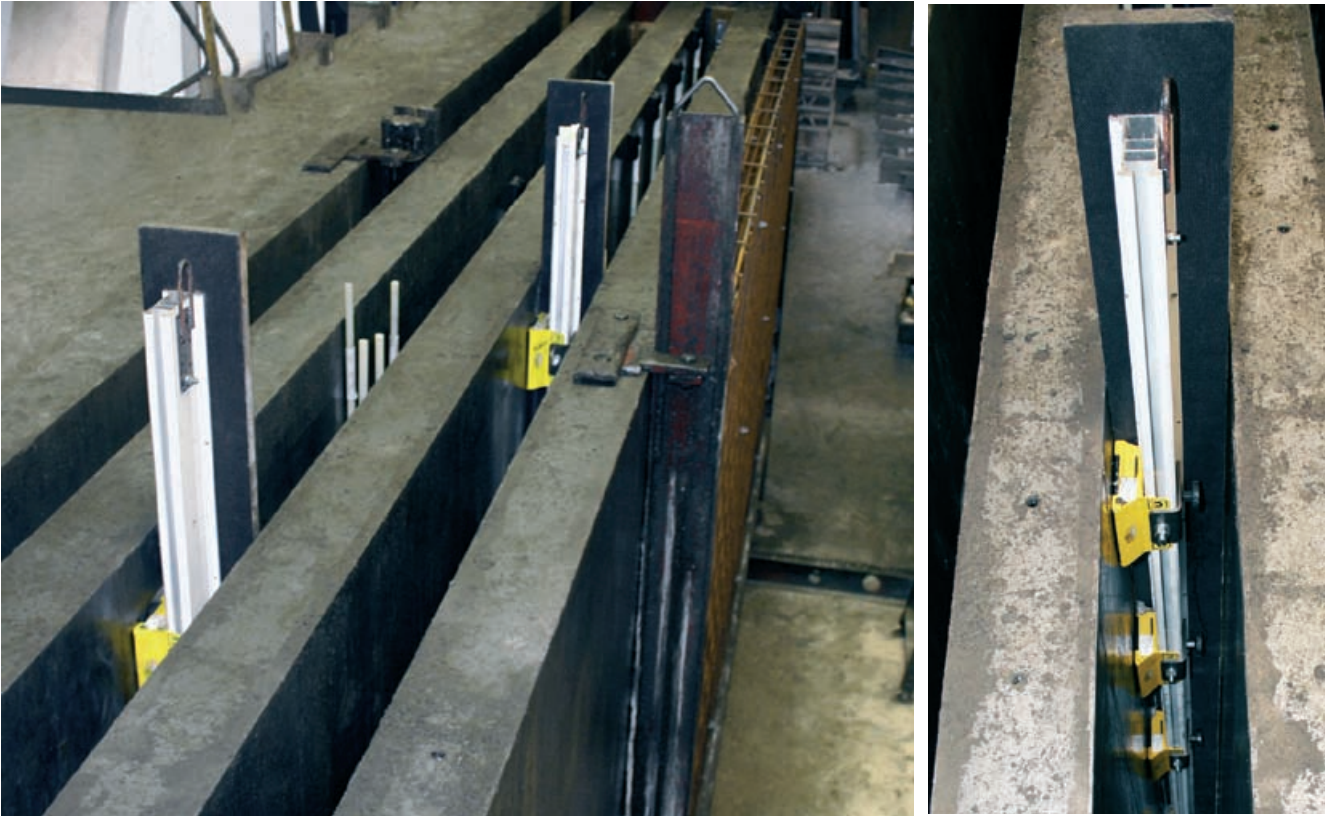


FaMe in Battery Molds



Battery molds can be furnished quickly and easily using FaMeFlex profiles and magnets. Once constructed, the same FaMeFlex frame can be used again with side plates of varying heights and made from different materials, such as plywood, steel, wood or plastic. No nailing or bolting to the battery molds is required.

The FaMe system brings Elematic's superior methods for furnishing and building molds to the highly productive and space efficient production of high-quality solid walls with battery molds.

The modular system, comprising of aluminum profiles and FaMe magnets, can be used to furnish walls from 70 mm up to almost any size and in almost any shape. Dimensions can be changed quickly and easily and the system can be expanded as your need grows.

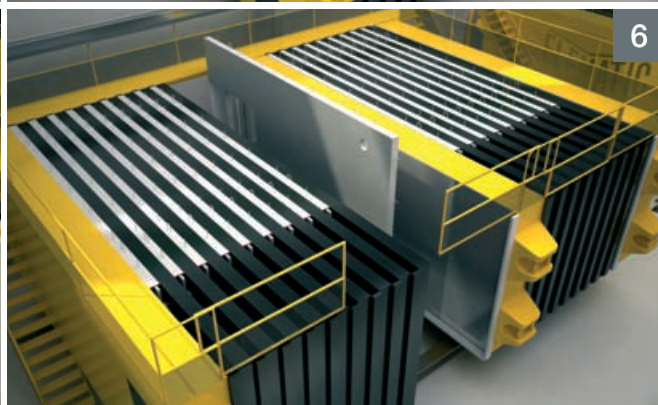
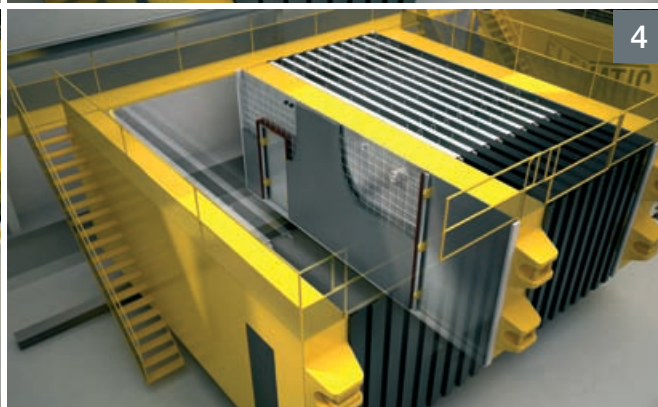
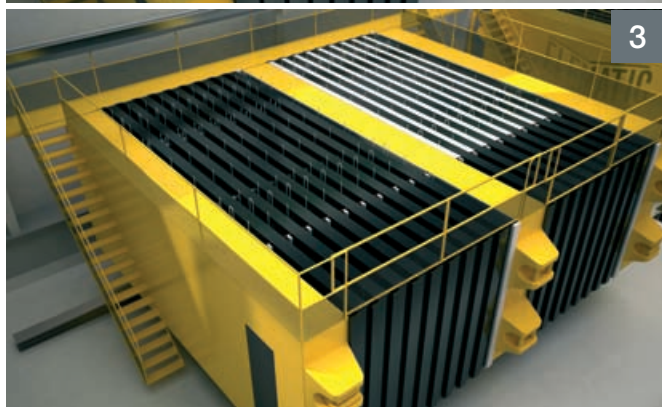
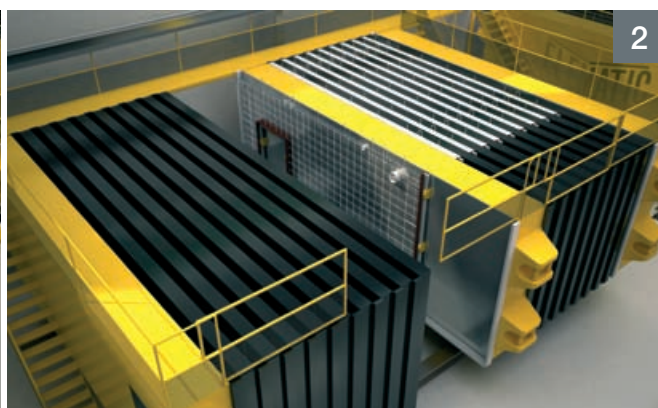
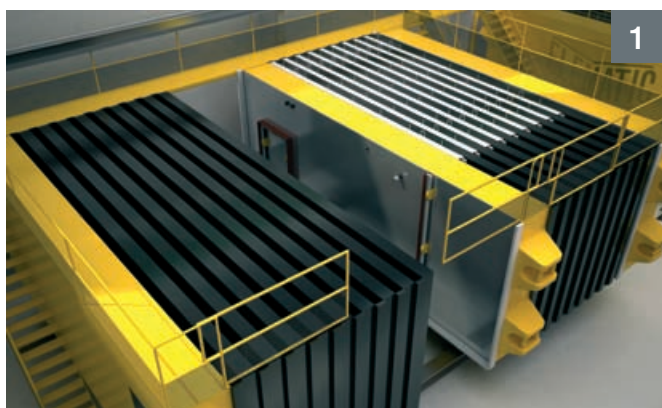
The lightweight and durable all-aluminum profiles are recyclable and can be used over and over again for hundreds of cycles. The versatile FaMe Magnets can be placed freely at any desired point to lock the profiles into position.

With the FaMe battery mold system, there is less need for after-handling. The molds can be stripped in vertical position with speed and precision; and, as the FaMe magnets remain fixed to the side forms even when released, ultimate safety is ensured.

Elematic's Fastening Method™ (FaMe) offers a safe, time-saving and versatile means to shape precast concrete products to your customers' specifications. The system is usable in both battery molds and steel tables.



FaMe in Battery Molds



FaMe in Battery highlights:

SAFE

- in Battery the steel table is in vertical position throughout the whole process
- FaMe magnets are prefixed to side profiles to form a complete frame
- the magnets, profiles and sides remain fixed even when the system is dismantled

UNIVERSAL

- all FaMe products are universal and can be used in both battery molds and table molds

FLEXIBLE AND FAST

- FaMe can furnish walls from 70 mm up to almost any thickness just by changing the side plate
- dimensions can be changed quickly and easily
- the system can be expanded as your need grows
- the all-aluminum profiles are recyclable and can be reused for hundreds of cycles
- the same frames can be used with side plates of different materials